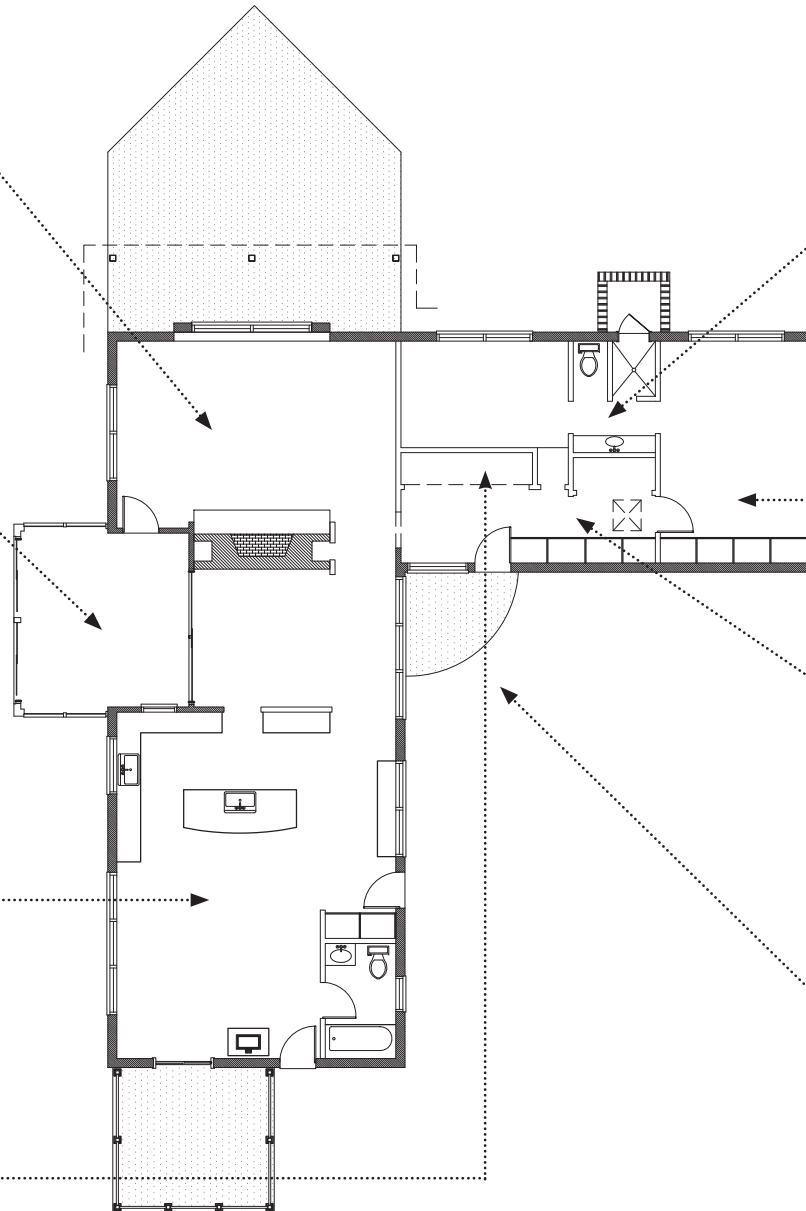


Floor Plan



Living Room

- Super insulated doors, windows and fixed glass
- Western glazing and walls sheltered from hot western sun by large 8' roof projection
- Central fireplace within the house envelope creates a large amount of mass and helps temper heating and cooling fluctuations.

Porch/Sunroom

- Enclosed porch with sliding doors, creating winter solarium for plants and sunspace for people
- With 3 sides recessed into heated envelope the room never drops below 50 degrees and on a sunny 20' winter day space will often reach over 100' before we open it to the rest of the house.
- Mass in concrete slab and flagstone maintains heat long after sunset
- Small supplemental wall heater allows for opening space to the rest of the house on cloudy winter days and evenings.

Kitchen/Family Room

- Firewood is a free resource for most builders, and enjoyable. A woodstove by "Vermont castings" (one of the first companies to develop new efficiency technology) is backed by flagstone over concrete board with heavy insulation behind to capture heat and release long after fire is out.
- Bathroom has cork flooring, Reoriented strand bamboo plywood on vanity cabinet (both are sustainable natural products, The bamboo plywood uses no formaldehyde based glues and release zero VOC
- Low water use toilet with hydraulic seat closer

Mechanical room

- Surrounded by 8" concrete block creates mass and stop sounds from entering bedroom & study behind
- Houses majority of hot water solar storage, controls and hydronic (in the floor) heating system equipment

Master Bath

- Countertops made of 100% recycled paper
- Oak trim material salvaged from barn stall dividers, when removed from property
- Indoor/outdoor shower is not quite green, but keeps the door closed on hot days
- Low flush toilet
- Natural lighting from glass block and door to outdoor shower
- Wood veneer cabinet over a real wood plywood made with formaldehyde free binders
- Hand made sinks from reclaimed copper

Master Bedroom

- Simple paddle fan distributes heating and cooling, and reduces reliance on AC
- Super insulated low-e, argon filled windows. Fixed glass panels are triple pane

Hallway

- Skylight supplies natural lighting for dark hallway and transom lets light into adjacent bedroom
- Oak flooring meets stringent standards of the Forest Stewardship Council (FSC), harvested within 200miles, and finished with Tung Oil.
- Tung oil is a natural low VOC finish from the nut of the Tung Tree (can almost be infinitely touched up with out major refinishing)

Entrance

- Built-in hidden gutters at all ingress/egress and over large picture windows
- Super insulated pet door!